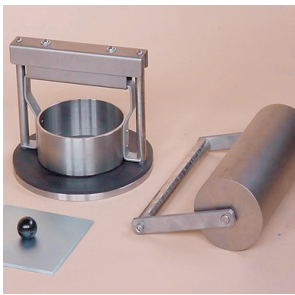
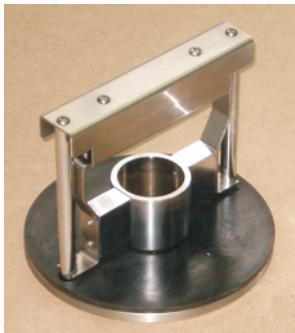


COBB TESTER
model COBB



The COBB method is used worldwide to determine the water absorptiveness of sized paper and board, including corrugated fiberboard under standard conditions.

The water absorptiveness is a very important and useful parameter in the specification of paper and board for use in the packaging and printing industries.



50 cm² test area

MAJOR TECHNICAL CHARACTERISTICS	
Test area	100 cm ² / Ø112,8 mm
Water depth	10 mm
Water volume	100 mL
Conditioning roll mass	(10,0 ± 0,5) kg
Diameter of conditioning roll	(90 ± 10) mm
Template	(125 x 125) mm

The COBB has a precision machined testing cylinder, which driven by two precision coils and guided by two axles ensures that its flat lower edge is firmly positioned over the test sample with constant uniform pressure, reducing the risk of leakages and increasing the repeatability of test results as well test speed.

The conditioning roll has a sliding handle which ensures that only the standard conditioning weight is applied to the test piece.

The COBB is also delivered with a template for the quick and accurate preparation of standard test samples.

Option: version with 50 cm² test area for users with small sized samples

Optional accessories:

· Blotter pure pulp Ø180 mm, 250 g/m²

Applicable Standards: ISO 535 · TAPPI T-441 · NM-ISO 535

	Dimensions	Weight
COBB	(150 x 150 x 150) mm	4,5 kg
Roll	(180 x 95 x 220) mm	11 kg
Template	(125 x 125 x 35) mm	0,2 kg
Power supply: manually operated		

Note: due to constant development our equipment design and specifications are subject to change without notice.