

Thwing-Albert

INSTRUMENT COMPANY

MAP-3™ Motion. Analysis. Presentation.

MAP-3 provides control over all functions including test motion, data collection, analysis and presentation

Motion Control

User-friendly operation simplifies even complex test applications by defining all required steps ahead of time.

Detailed analysis.

Statistical information is automatically generated and displayed with individual results and curve results. **Accupoint™** enables you to quickly move data points after test completion to accurately reflect test dynamics.

Customize presentation.

Select unique display styles, result and graph formats, multilingual report labels and custom color test curves.

Comprehensive software - no modules

MAP-3 is truly unique as it provides a wide range of test capabilities without costly add-on modules. An all inclusive program you get a wide range of test capabilities including tension, compression, peel, tear, coefficient of friction, burst, ZDT, flexural, and cycling to name a few.

The combination of MAP-3 and the EJA Vantage test frame enables you to test without restriction.



One Software Package, Endless Possibilities.



◀ Tensile Testing

Quickly set pre-tension load and test speed variations. Cycle and creep testing is simplified by predefining number of cycles and load force maintain. Advanced measurements include: Secant, Youngs & Chord Modulus, Load, Position & Time Traps.



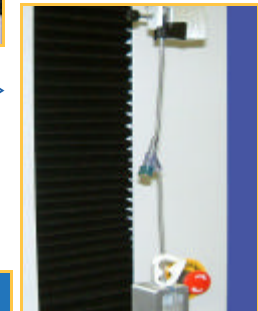
▷ ZDT Testing

MAP-3 provides selectable pre-compression force, dwell time and maximum Internal Bond Force



◀ Ropes, Wire, Yarn

Tensile testing of flexible nylon, polypropylene, hemp and other materials.



▷ Medical devices and Biomaterials

Measure strength of medical devices, insertion/extraction applications, and material puncture



◀ Compression

Plastics, foams and packaging material. Compress to a force or load. MAP automatically measures height, conditions sample and records changes between cycles.

MAP IT!

Windows® Environment

With a Windows-based user interface, MAP provides familiar, easy-to-use drop-down menus and dialog boxes. MAP operates on multiple platforms including 98, NT, 2000 and XP and is compatible with other Windows programs including Access™ and Excel™. The ability to export and import data from these programs increases cross uses throughout an entire company.

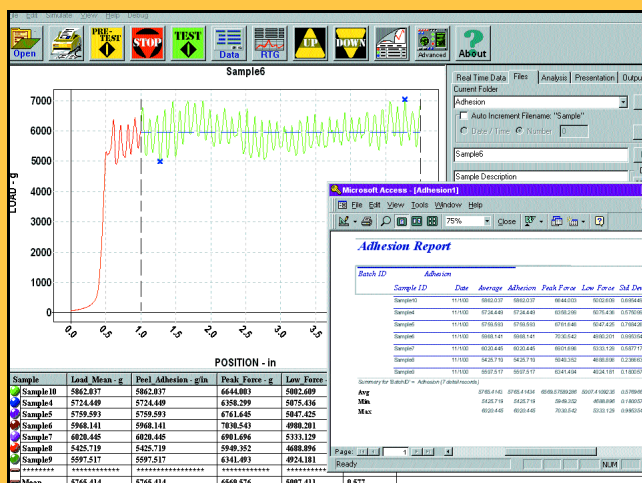
Flexibility in Motion

Map Modifier™ enables you to quickly change existing tests and save them as new methods. Drop-down menus display the variables that commonly need modification including test speed, peel distance and gage length. Exceptionally simple, change the necessary variable, save it and start testing.

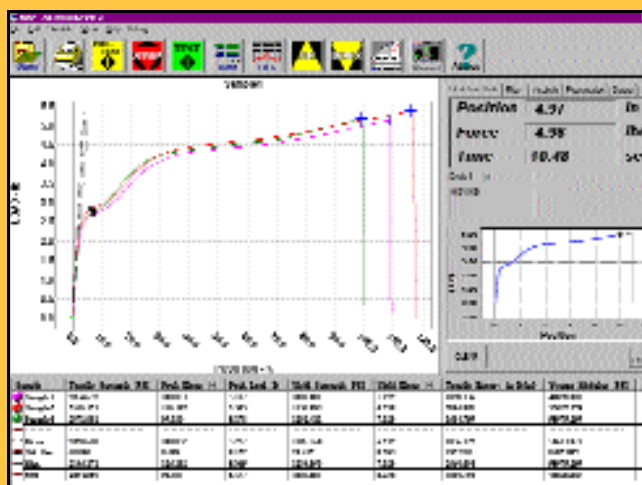
See Test Data in Real-Time

A real-time display enables observation of critical test dynamics as they occur. Test curves can be overlaid for instant comparison between samples or with an average reference curve.

Zoom in on sections of the test curve to study crucial test details. Interactive graphic capabilities enable you to place event markers to highlight critical points on the test curve including the modulus, peak and break value, slope region and yield point.



▲ Writes test data directly into Excel and Access



▲ Overlay test curves for instant comparison

MAP-3.0
One Software Package,
Endless Possibilities.

Contact us to discuss
the possibilities or
schedule a demo!

215-637-0100
info@thwingalbert.com



Thwing-Albert
INSTRUMENT COMPANY

Representante Oficial para América do Sul
REGMED INDÚSTRIA TÉCNICA DE PRECISÃO LTDA
tel: + 55 11 3601-5700
fax: + 55 11 3601-5973
regmed@regmed.com.br
www.regmed.com.br
www.thwingalbert.com