

# MORFI WALL THICKNESS

The **MorFi wall thickness** device has been developed by CTP. It is industrialized and distributed by Techpap. This instrument allows you to obtain in some minutes highly accurate measurements of fiber wall thickness. The MorFi WT thus completes the MorFi instruments range (MorFi Lab, MorFi on-line, MorFi carousel, MorFi Stat).

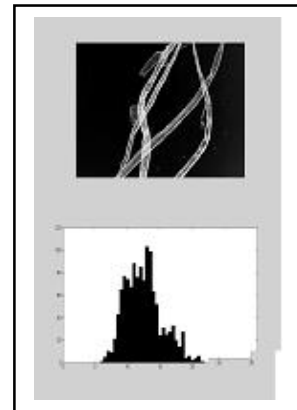
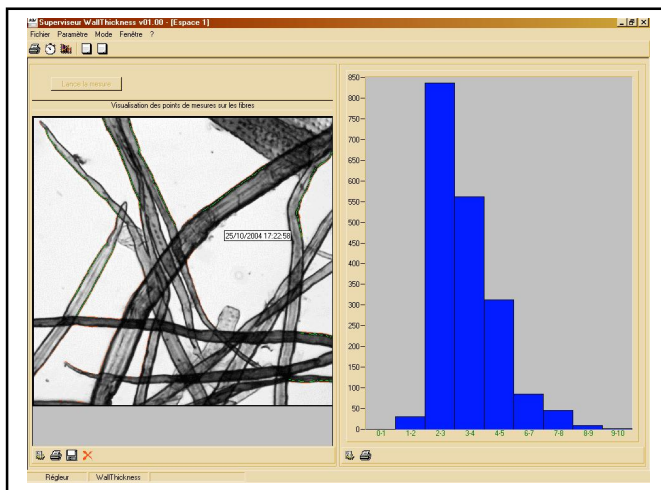


**The instrument is an independent table unit. It is divided in two parts.**

The hydraulic part with pulp sampling system, pump, circuits and valves, an original measuring cell and the camera with microscope resolution lens.

The electric part integrates mainly electric supplies, relays and a PC.

Interface is done by screen, mouse and keyboard. Network connection is possible.



Measurement on pulp sample with High resolution (0,7 $\mu$ ) to give a complete information about cell wall thickness average & distribution