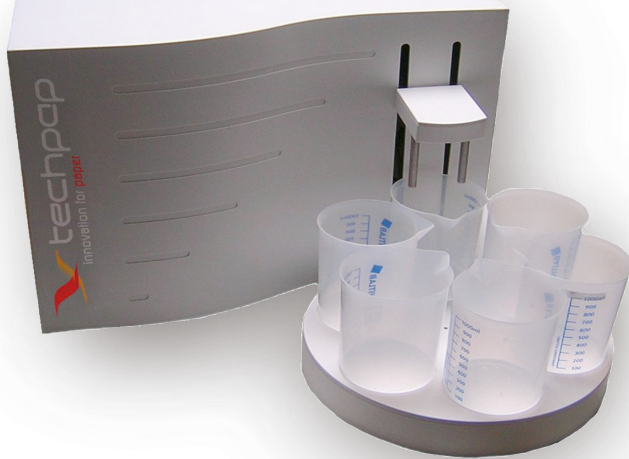


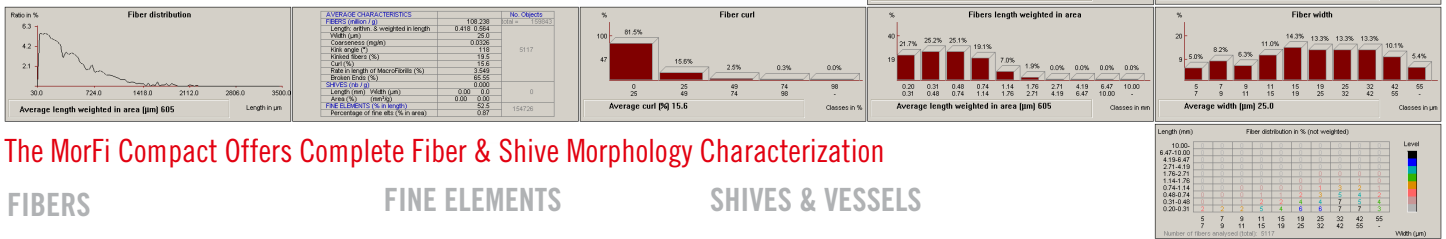
# MORFI COMPACT

## INNOVATION FOR PAPER

### A POWERFUL, LOW COST & COMPACT SOLUTION FOR PULP MORPHOLOGY MEASUREMENTS



The MorFi Compact is specifically designed for intensive laboratory use and provides a complete interface for the treated data display. This slimmed down version of the MorFi Lab unit offers identical optics & flow cell measurement characteristics to ensure a blockage free process control as well as measurement accuracy. The interface gives a complete display of the treated data and makes it possible to recalculate this data to highlight different features. The data can be saved and exported to other computer programs.



### The MorFi Compact Offers Complete Fiber & Shive Morphology Characterization

#### FIBERS

Average & Distribution for  
Real Length Measurements  
Weighted Length Measurements  
Width Measurements  
Kinked and Curled Fibers  
Fiber Broken Ends  
Macrofibrills

#### ISO/FDIS 16065-2

#### User Friendly Software

- » All parameters adjustable including fibers & fines definitions
- » Instant data recalculation using new parameter values (no time limit on data history)
- » Real time fiber images displayed on screen as well as data acquisition
- » Full data exportation & multi test exportation for easy result analysis under Excel
- » Easy to understand histograms, arrays and curves
- » Images saving ability
- » Three passwords protect user authorization levels

#### FINE ELEMENTS

Average & Distribution for  
% in Area  
% in Length  
Number per gram

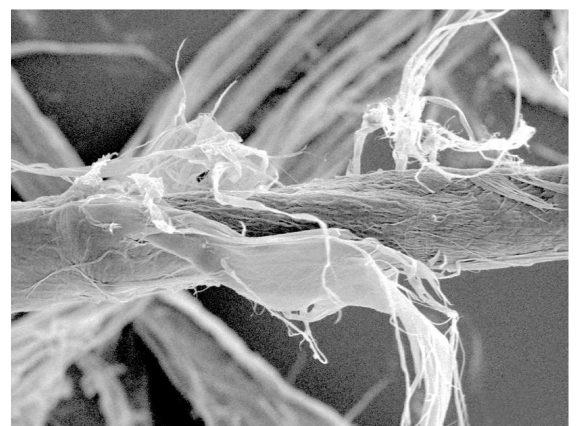
#### SHIVES & VESSELS

Average & Distribution for  
Length  
Width  
Area  
% area / fibers  
Number per gram

#### Portable

- » 110V or 220V power connection
- » Water & air connection not needed
- » Light weight with aluminium case
- » Operates with a laptop computer

**RUGGED CONSTRUCTION FOR INTENSIVE USE**  
**ONLY 3 MINUTES FOR A TYPICAL FIBER MEASUREMENT**



#### TECHPAP SAS

BP 251 - 38044 Grenoble cedex 9 - France  
Tél. +33 (0)4 76 51 74 75 - Fax +33 (0)4 76 42 05 04  
[www.techpap.com](http://www.techpap.com) - [techinfo@techpap.com](mailto:techinfo@techpap.com)

#### North America: Techpap, Inc.

5970 Unity Drive - Suite E - Norcross, GA 30071 (USA)  
Tel. +1(770)734 04 42

# MORFI COMPACT

## Technical Description

ISO/FDIS 16065-2

### Analysis duration

* Fibers (0.03 g/l)	2-3 minutes
* Shives (0.3 g/l)	From 3 minutes

### Measured Properties

#### Fibers

Number of Fibers per gram	up to 10 mm per gram
Average Length Arithmetic, Weighted $Li^2$ , $Li^3$ , $Ai$	(configurable)
Length Distribution	10 classes
Length Profile	100 fixed classes
Average Width	10 to 75 $\mu m$
Width Distribution	10 classes
Distribution Length = f(width)	3D Display
Ratio Long Fibers / Short Fibers	f(length, width)
Coarsness	Automatic calculation

#### Curl

Average Curl	(configurable)
Curl Distribution	5 classes

#### Kink

Average Angle of Kinks ( $^{\circ}$ )	
Kink Distribution	5 classes
% of Kinked Fibers	
Average Number of Kinks Per Kinked Fiber	
% of Broken Fibers	
% of Microfibrillation	

### Shives & Vessels

Average Length & Width	(configurable)
Length Distribution (Arithmetic, Weighed in Length or in Area)	10 Classes
Width Distribution	10 Classes
Total Area per Gram	
Area Distribution	10 Classes
Distribution Length = f(width)	3D
Display	

### Fine Elements

% Area of Fine Elements / all other Elements	
% Length of Fine Elements / all other Elements	
Average Length (Arithmetic)	
Average Area (Arithmetic)	(configurable)
Fines Distribution per Area Classes	10 Classes
Fines Distribution per Length Classes	10 Classes

### Computer not included

An optional computer can be delivered by Techpap with a 17" monitor, keyboard and mouse. System can be also used with a laptop.

### System requirement:

Windows 2000Pro or XP Pro Sp3  
1 USB 2.0 & 1 firewire 1394 input  
RAM 2 Go

