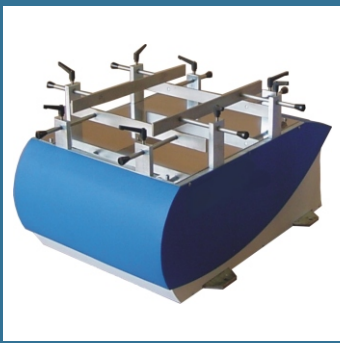


**PACKAGE SHAKER**  
**VIBRAMAX**  
*model VMX-1100*



Control panel

The VMX-1100 is a small sized package shaker designed for the laboratory simulation of typical hazards present in distribution environment.

Its rigid platform with adjustable restraining fences moves in a 25.4 mm peak to peak vertical sinusoidal motion and applies a uniform vibration input over the entire test specimen.

The vibration frequency is linearly adjustable within the range of (2-5)Hz (120-300) rpm so user can test a package under its exact resonance frequency, achieving maximal destructive performance in minimal test periods.

Enables the assessment of external and internal packaging. Rugged machine design ensures a reliable operation with maximal durability and minimum maintenance.

**MAJOR TECHNICAL CHARACTERISTICS**

Maximal capacity	75 kg
Test platform size	(500 x 500) mm
Double amplitude test displacement	25,4 mm
Adjustable test frequency	(2 - 5) Hz

The VMX-1100 has a remote control panel for comfortable and safe operation.

**Optional accessories:**

- Special custom made restraining fences;
- Augmenting test platform (750x750) mm.

**Applicable standard:** · ISO 2247/B · ASTM D-999/A1

Power supply	220 VCA, 50 / 60 Hz, 1,25 kW, single phase
Dimensions	(1000 x 1000 x 600) mm (W x L x H)
Weight	175 kg

Note: due to constant development our equipment design and specifications are subject to change without notice.

**Address:** Av. Dr. Alberto Jackson Byington, 1595 · **CEP:** 06276-000 - Osasco - SP - Brazil  
**Phone:** + 55 11 3601 5700 · **Fax:** + 55 11 3601 5973 · **e-mail:** regmed@regmed.com.br  
[www.regmed.com.br](http://www.regmed.com.br)