

PULMAC
INTERNATIONAL

A Division of Cowan Technologies Inc.

Z-Span™ 2400



Z-Span Tester

**Automatically measure,
analyze, and display
fiber strength numbers
in less than five minutes**

Description

The Z-Span 2400 offers the latest in Z-Span technology. Controlled by an intuitive on board, menu driven controller, the Z-Span 2400 Tester is quickly learned and simple to operate. Once the sample has been loaded onto the feed tray the hands-off test procedure can be initiated and inside of 5 minutes the custom-configured Z-Span database, residing on your PC, will be automatically updated. The Z-Span database, on your PC, can then be selectively recalled for printing, on-screen display, or for export onto a spreadsheet file on either floppy disk, a flash drive, or a remote system. Additionally, individual, tagged, ASCII file test results can be sent via FTP to an IP address or can be sent to a designated directory location. The Z-Span 2400 is delivered factory-calibrated with install software install CD.

Benefits

Z-Span technology brings new certainty to pulp strength. Based on systematic testing, the numbers generated by the Z-Span 2400 Tester supports monitoring, troubleshooting, dispositioning and process optimization. Automated Z-Span testing tells you what you need to know when you need to know it in order to keep your customers happy while saving you both time and money. Direct benefits to your productivity can include increasing yield, decreasing chemical costs, reducing downgraded pulps, penalty payments, and warehousing costs, all the while improving communication and productivity of pulp users.

Bottom-line: increased profitability.

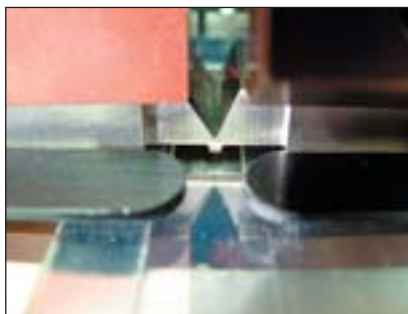


**Fast
Strength
Testing**

Pulmac International
A Division of Cowan Technologies Inc.
32 East State Street, Suite 10
Montpelier, Vermont
05602 USA

Phone: + 1.802.223.2663
Fax: + 1.802.223.2664
Email: info@pulmac.us
URL: www.pulmac.us

Z-Span™ 2400



Z-Span anvils and jaw tips

Z-Span Tester

This tester measures 24 peak load zero and/or short span tensile strength numbers within 5 minutes of loading the feed tray.



Represented by:

REGMED Indústria Técnica de Precisão Ltda.

Av. Dr. Alberto Jackson Byington, 1595
 CEP 06276-000
 Osasco - Brasil
 Phone + 55 11 3601-5700
 Fax. + 55 11 3601-5973
 regmed@regmed.com.br
 www.regmed.com.br

System Features:

- Once loaded will perform 24 zero and/or short span tensile tests in 5 minutes.
- Numbers generated are sensitive to changes in Fiber Strength, Bonding and Length.
- Installation and training support.

Software Features:

- Password-protected system database function and directory access.
- Intuitive graphic menu driven interface.
- Reference pulp program including chart with auto limit settings to monitor tester calibration.
- Output data to LAN directory, printer, flash drive, or screen. Database is backed up to specified location.
- Service screen for specific maintenance functions.
- Custom descriptor field for unique test identification.
- Custom algorithm for outlier rejection.
- Scroll-through screen display of stored data with four levels of sort (Date/Time, Location, Description, Test).

Hardware Features:

- Rugged construction
- Jaw and anvil inserts precision-machined from hardened & rust resistant alloy.
- On board Controller
- Hinged cover for easy maintenance
- CD-ROM install disks.
- Precision regulator controlled rate of loading
- Operation and Maintenance Tool Kit
- Operator Manual
- Auto air blow at the end of each test run
- Stepping motor and proximity switch X-Y positioning system

Shipping Specs	Weight	Height	Width	Depth
Skid	100 kg	115 cm	95 cm	75 cm

Services Required:

- Instrument quality air; 8 bar pressure, 6 L/sec flow
- 1/4" slip fitting for air supply
- 220v, 50 cycle, 5 amp electrical service