

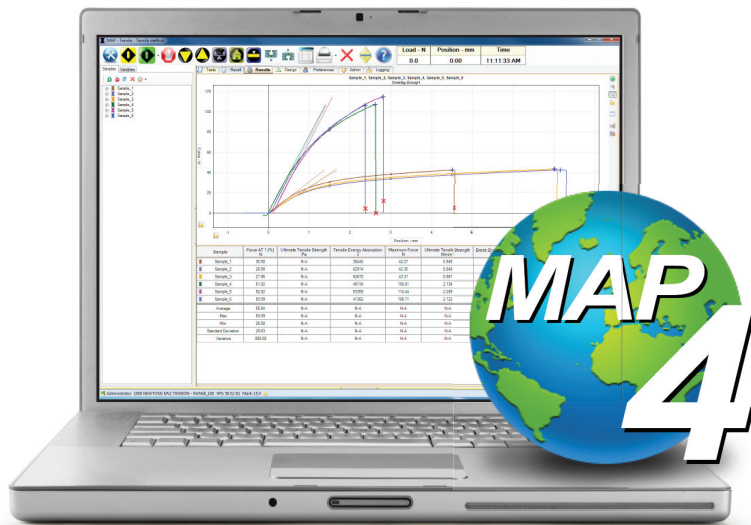


**Thwing-Albert
Instrument Company**

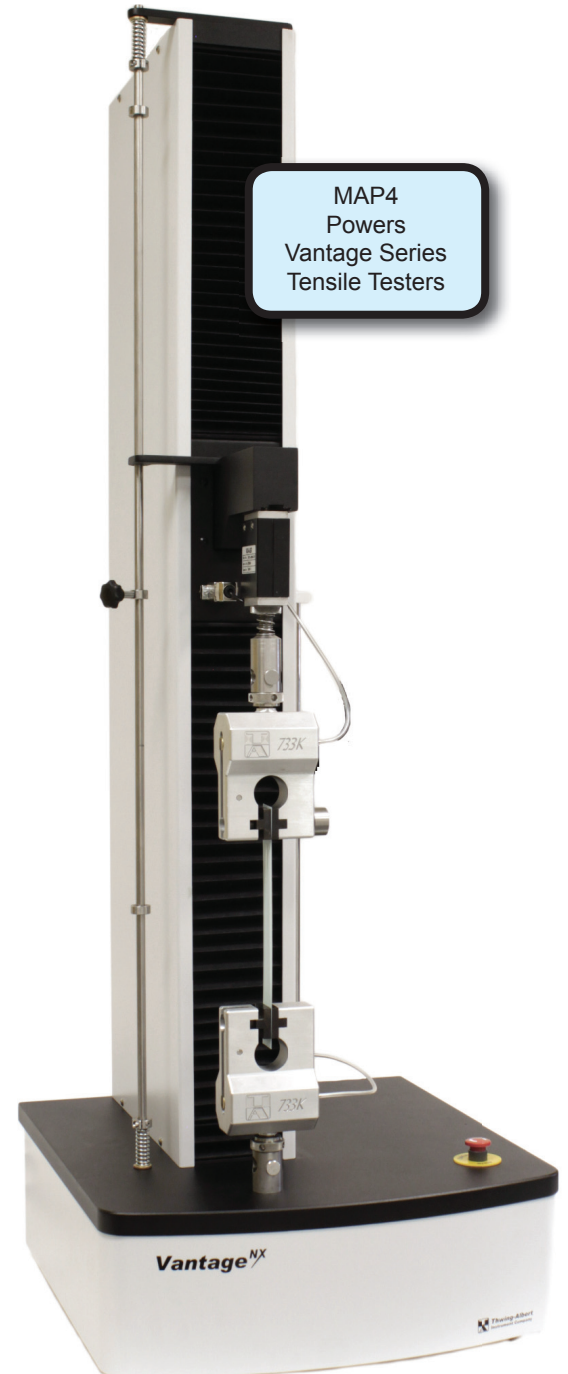
More Than a Century of Testing Solutions

MAP4 Software **Motion, Analysis, Presentation**

Materials Testing Software



- ✓ View Real-time Graphical Test Results
- ✓ User Customizable Test Methods
- ✓ Create Custom Presentation Templates
- ✓ Share Video and Sound Training
- ✓ Control Your Test Result Display
- ✓ Simplify Analysis by Tracking Variables
- ✓ Group Statistics for Powerful Analysis
- ✓ Easy Unit Conversion Built-In
- ✓ Multi-Lingual System Capabilities



Dynamic Motion Control, Detailed Analysis, Power to Present...

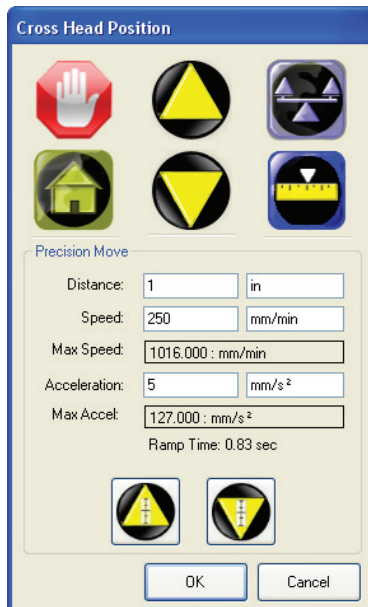
MAP4 is a comprehensive advanced materials testing software system used for many applications. No need for expensive add-on modules. This updated version of MAP Software is a user-friendly system with complex testing capabilities.

Easy to use - it is now possible to design, customize and maximize your testing procedures and final output with simple menus. Write custom scripts based from templates or from scratch.

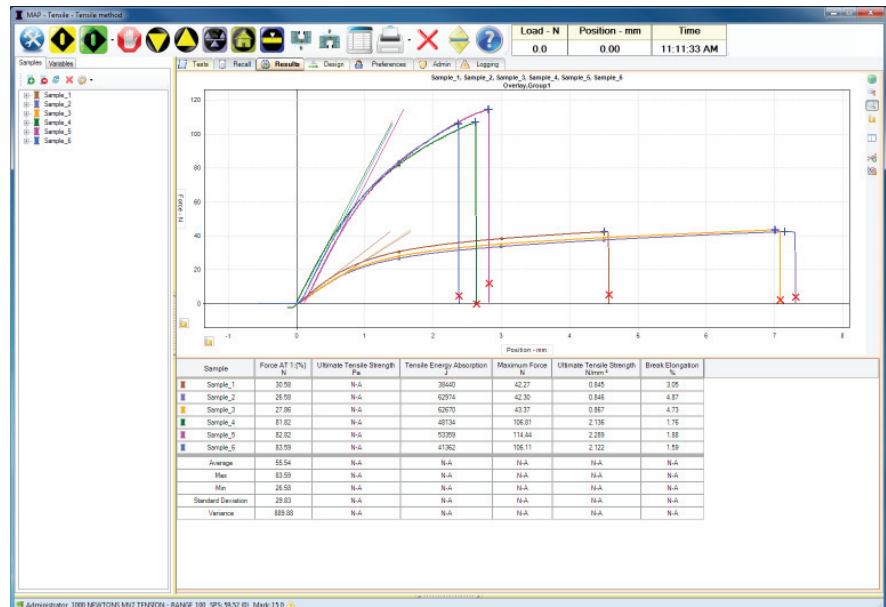
Thwing-Albert's MAP4 software comes equipped with preset standards available for use out of the box. The MAP4 software is compatible with the Vantage Series Tensile Testers working to multiply exponentially the possibilities and ease of testing.

Test methods are built-in to the program for various applications including tension, compression, peel, tear, friction, and with the ability to customize the potential is unlimited.

When it comes to flexibility and capability, MAP4 software is equipped to test a variety of materials including paper, plastic, rubber, textiles, medical devices, seals and foam.

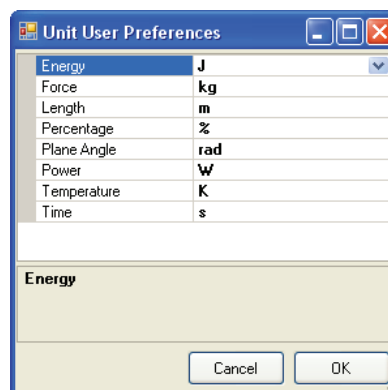


Digital Control Panel



Real-time Graphical Display

Users see the Stress/Strain Curve as the test runs.



Easy Unit Conversion

Simply select the desired unit conversions from the drop down menus to make changes to test criteria:

Energy Length
Force Plane Angle
Power Temperature
Time Percentage



Custom Test Result Display
Users can customize the "Result" screen to view results based on their needs.



Group Statistics
Group test results together using tracking variable so that you can see statistics on each group.



Tracking Variables
Add "Tracking Variables" that let you track your results, search the database and group data on screen.



Language Database
Administrators can add and edit the database for any language.



Set Pass/Fail Conditions
Increase productivity by setting pass/fail conditions for testing methods to alert technicians when a test result is out of specification.



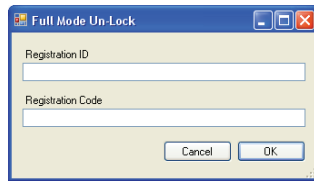
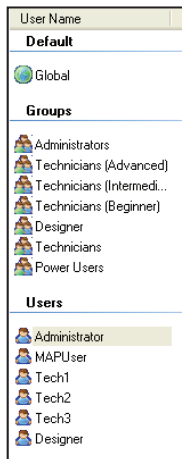
Multi-Lingual Capabilities:
English, Spanish, German, French, and more...



SQL Database
Easily manipulate test results...they can be queried, recalled and exported to Excel for enhanced analysis.

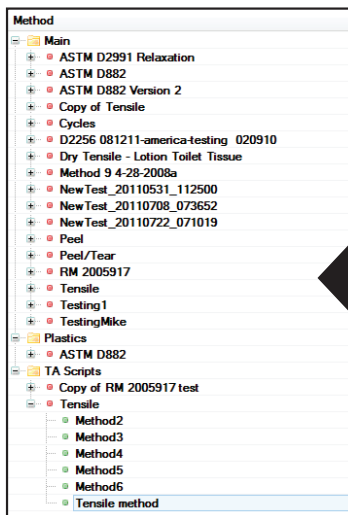


Password Protection
Advanced users can setup user groups and individuals software privileges.



Label	Time	Operator	Description	Ultimate Tensile Strength-N/mm ²	Peak Elong-%	Force AT
Tensile - Tensile method						
Sample_5	7/28/2011 10:29:38 AM	Administrator		2.122	1.579	83.588
Sample_5	7/28/2011 10:28:59 AM	Administrator		2.289	1.874	82.825
Sample_4	7/28/2011 10:28:12 AM	Administrator		2.136	1.746	81.818
Sample_3	7/28/2011 10:22:49 AM	Administrator		0.867	4.675	27.863
Sample_2	7/28/2011 10:21:49 AM	Administrator		0.846	4.771	26.581
Sample_1	7/28/2011 10:20:57 AM	Administrator		0.845	3.008	30.579

Built-In Library of Standards...Endless Possibilities



Sample List of Built-In Test Methods

Includes a built-in library of testing methods to comply with **ASTM, ISO, TAPPI, DIN** and other standards.

Simple customization when your test parameters change open existing methods, modify and save new custom methods.

Advanced users can have full control over the motion analysis and the presentation of data.



User Customizable Methods

Template Creation

Administrators and users with software privileges can design and build complex scripts that control the every aspect of the test method.

Presentation Selection

Manager

Modified: False
Visible Groups: String[] Array
[Uncheck All Groups](#)
[Delete All Groups](#)
[Overlay Data](#)

Select Groups To Display

Overlay - cm, N Visible

Unit Type: cm, N

X Axis
 Y Axis
 X Overlay
 Y Overlay

All Presentation Objects

Effective Configuration

X Axis

Auto Scale	True
Axis	NONE
Label	
Max	0
Min	0
Percentage Variable	
<input checked="" type="checkbox"/> Range	
Scale Type	LINEAR
Unit	

Y Axis

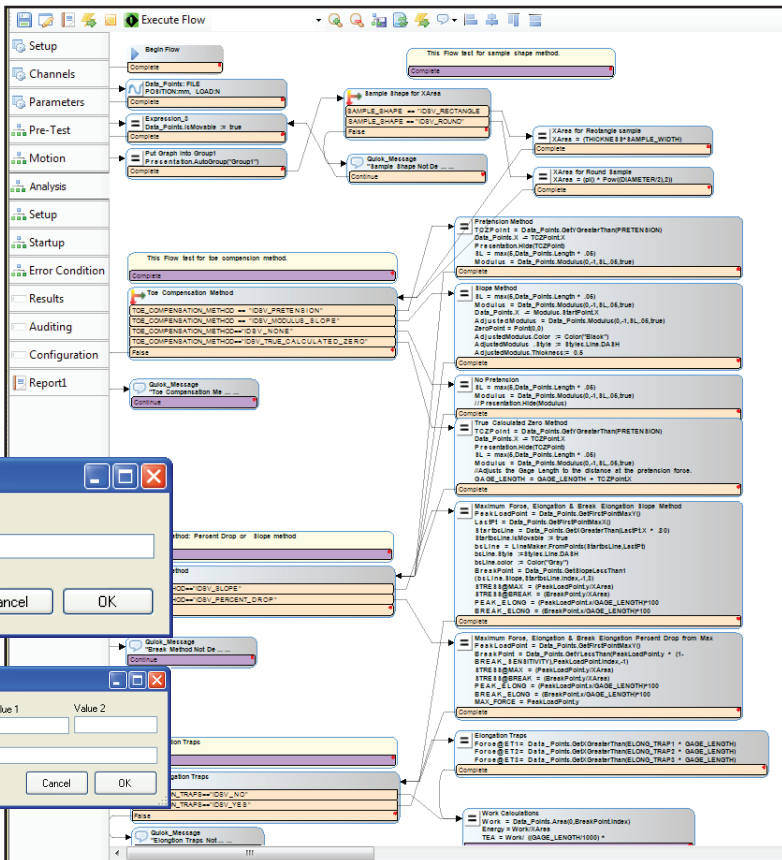
Auto Scale	True
Axis	NONE
Label	
Max	0
Min	0
Percentage Variable	
<input checked="" type="checkbox"/> Range	
Scale Type	LINEAR
Unit	

Enter New Template Name

ASTM

Recall Criteria Builder

Variables	Operation	Value 1	Value 2



System Requirements

- ✓ Operating System: Windows® 7, 8 and 10
- ✓ Microsoft .NET Framework 4.5
- ✓ Processor: 2GHz or faster processor
- ✓ RAM: 4GB
- ✓ Hard Disk Size: 250GB
- ✓ 2 USB ports
- ✓ Video: 1024 x 768 minimum

Includes FREE technical support for one year.



Contact Thwing-Albert for a Demo
856-767-1000 or info@thwingalbert.com

Thwing-Albert Instrument Company
14 W. Collings Avenue, West Berlin, NJ 08091, USA
tel 856-767-1000 ■ fax 856-767-2615 ■ info@thwingalbert.com



**An ISO 9001
Registered Company**