

SIMPATIC 2IP

ON-LINE ANALYSIS OF DIRT, INK OR SHIVES IN STOCK



The Simpatic 2IP is the result of 15+ years of experience in deinking and pulp cleanliness research dedicated to the development of instruments to create solutions in this area. The Simpatic 2IP is the perfect tool for on-line particle detection, is simple to install, easy to use and perfectly representative of the process contamination.

New IP Camera:

- Plug and Play (easy installation)
- Multiviewer on mill network
- Higher frame rate grabbing
- Better Image quality & background correction

- Automatic luminancy regulation
- 3 programmable 420mA outputs built in with the new upgrade,
- 2 programmable relay outputs with the upgrade,
- Less noise sensitive
- No Computer inside

Calibration : (calibration procedure included)
calibration chart,
focus adjustment,
automatic work out of real resolution

Large Volume of Pulp Inspected
(approximately 1,5 m³/h)

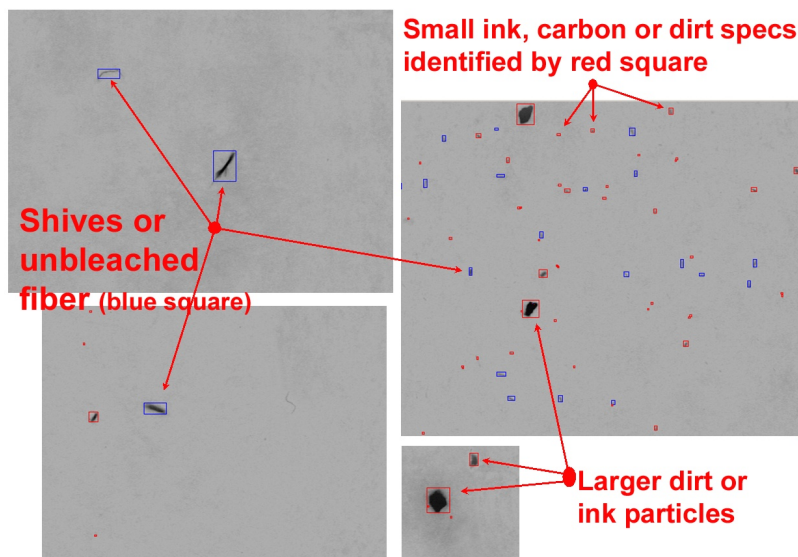
REAL-TIME MEASUREMENT &
DISPLAY BASED ON AN ANALYSIS
OF 30 IMAGES / SECOND

Rugged construction for continuous intensive use

The Simpatic 2IP is built to operate 24/7 under extreme operational conditions. The system has no moving parts leading to minimal maintenance requirements. Techpap offers remote maintenance & diagnostics using the internet and our secure communication link.

Detection of all Contrasted Contaminants:

These contrasted contaminants include dirt, ink, shives, colored plastics, sand, bark, stone cells, carbon and any other contrasted particle that would cause paper quality problems.



 **techpap**
innovation for paper

TECHPAP SAS

BP 251 - 38044 Grenoble cedex 9 - France
Tél. +33 (0)4 76 51 74 75 - Fax +33 (0)4 76 42 05 04
www.techpap.com - techinfo@techpap.com

SIMPATIC 2IP

ON-LINE ANALYSIS OF DIRT, INK OR SHIVES IN STOCK



The Simpatic 2IP is the result of 15+ years of experience in deinking and pulp cleanliness research dedicated to the development of instruments to create solutions in this area. The Simpatic 2IP is the perfect tool for on-line particle detection, is simple to install, easy to use and perfectly representative of the process contamination.

New IP Camera:

- Plug and Play (easy installation)
- Multiviewer on mill network
- Higher frame rate grabbing
- Better Image quality & background correction

- Automatic luminancy regulation
- 3 programmable 420mA outputs built in with the new upgrade,
- 2 programmable relay outputs with the upgrade,
- Less noise sensitive
- No Computer inside

Calibration : (calibration procedure included)
calibration chart,
focus adjustment,
automatic work out of real resolution

Large Volume of Pulp Inspected
(approximately 1,5 m³/h)

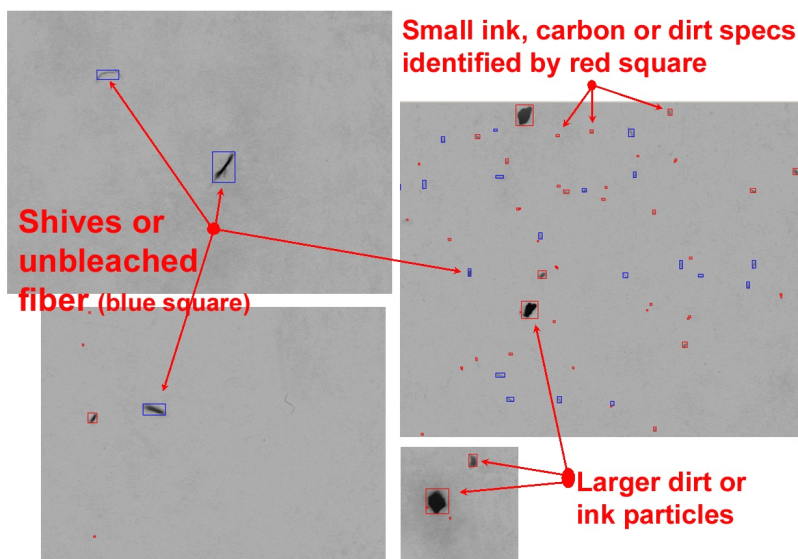
REAL-TIME MEASUREMENT &
DISPLAY BASED ON AN ANALYSIS
OF 30 IMAGES / SECOND

Rugged construction for continuous intensive use

The Simpatic 2IP is built to operate 24/7 under extreme operational conditions. The system has no moving parts leading to minimal maintenance requirements. Techpap offers remote maintenance & diagnostics using the internet and our secure communication link.

Detection of all Contrasted Contaminants:

These contrasted contaminants include dirt, ink, shives, colored plastics, sand, bark, stone cells, carbon and any other contrasted particle that would cause paper quality problems.



 **techpap**
innovation for paper

TEHPAP SAS

BP 251 - 38044 Grenoble cedex 9 - France

Tél. +33 (0)4 76 51 74 75 - Fax +33 (0)4 76 42 05 04

www.techpap.com - techinfo@techpap.com

SIMPATIC 2IP

SIMPATIC SAMPLER

MOST SIMPATIC INSTALLATIONS USE A DIRECT BYPASS CONNECTION FROM A PULP PIPE, HOWEVER; IN CERTAIN CASES ALTERNATIVE SOLUTIONS WORK BETTER, SUCH AS:

High Consistency sampler



Multi Sampler Relay System



High Consistency Samplers

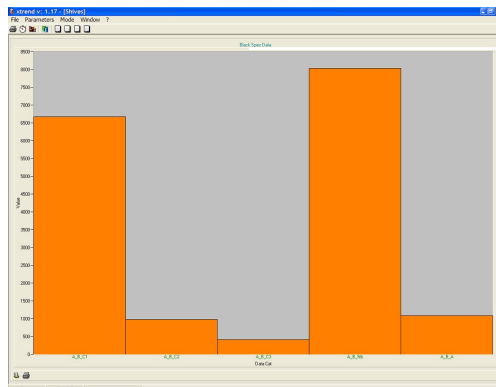
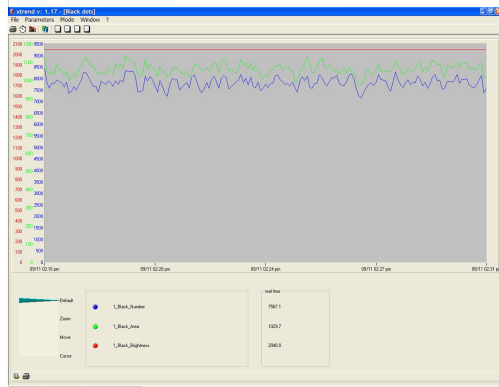
For some special applications where precise dilution is required, Techpap has developed the high consistency pulp sampler. This sampler has a range from 2 to 6% diluted down to 0.1-1% depending on pulp. It is easy to install and requires very little maintenance.

Multi Sampler Relay System

With this relay system multiple streams of pulp can be sampled through a single Simpatic2IP. This relay system is ideal for installations where pulp only needs spot checking, 100% sampling is not required. This system features adjustable sample timing and frequency.

X-Trend User Friendly Software for Data Collection

- Runs under the Windows Operating System
- Provides image display for all sample points
- Can be networked to a Data Historian or DCS
- Can be used on multiple user workstations
- Can control up to 6 Simpatics
- Provides a data history and archives all data
- Delivers statistical information on all data



	Input value	Average value	Last memory	Last memory
L_Shift_Auto	0.0	0.0	0.0	280.0
L_Shift_Auto	188.0	188.1	0.0	280.0
L_Shift_Highpass	280.0	280.2	0.0	280.0
L_Shift_C2D10	188.0	188.1	0.0	280.0
L_Shift_C2D10	188.0	188.1	0.0	280.0
L_Shift_C2D10	188.0	188.1	0.0	280.0
L_Shift_Summary	0.0	0.0	0.0	280.0
L_Shift_Random	188.0	188.1	0.0	188.0
L_Shift_T1	38.0	38.2	0.0	188.0

SPECIFICATIONS

Material of Construction	316L Stainless Steel
Dimensions	70 x 50 x 25 cm (H x L x D)
Weight	40 kg (110 pounds)
Resolution	100 μ m (50 μ m possible)
Pulp Flow	2 - 4 m ³ /h
Max Pulp Pressure	2 bars
Camera	IP Gigabit Camera B&W or Color
PC	To be delivered by the Mill (In option)

 **techpap**
innovation for paper

Please contact our certified representative:



SIMPATIC 2IP

SIMPATIC SAMPLER

MOST SIMPATIC INSTALLATIONS USE A DIRECT BYPASS CONNECTION FROM A PULP PIPE, HOWEVER; IN CERTAIN CASES ALTERNATIVE SOLUTIONS WORK BETTER, SUCH AS:

High Consistency sampler



Multi Sampler Relay System



High Consistency Samplers

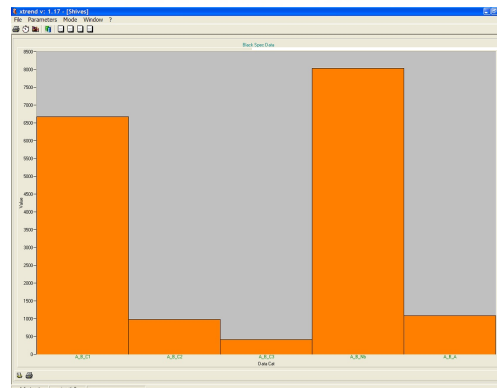
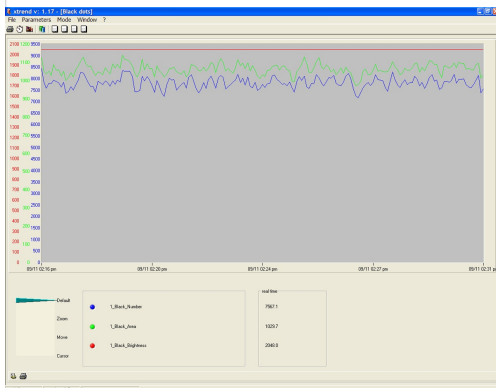
For some special applications where precise dilution is required, Techpap has developed the high consistency pulp sampler. This sampler has a range from 2 to 6% diluted down to 0.1-1% depending on pulp. It is easy to install and requires very little maintenance.

Multi Sampler Relay System

With this relay system multiple streams of pulp can be sampled through a single Simpatic2IP. This relay system is ideal for installations where pulp only needs spot checking, 100% sampling is not required. This system features adjustable sample timing and frequency.

X-Trend User Friendly Software for Data Collection

- Runs under the Windows Operating System
- Provides image display for all sample points
- Can be networked to a Data Historian or DCS
- Can be used on multiple user workstations
- Can control up to 6 Simpatics
- Provides a data history and archives all data
- Delivers statistical information on all data



	Initial value	Average value	Last status	Last history
1_Simpatic_Arm	0.0	0.0	0.0	200.0
1_Simpatic_Arm	100.0	100.0	0.0	200.0
1_Simpatic_Arm	200.0	200.0	0.0	200.0
1_Simpatic_200.0	0.0	0.0	0.0	200.0
1_Simpatic_200.0	0.0	0.0	0.0	200.0
1_Simpatic_200.0	0.0	0.0	0.0	200.0
1_Simpatic_Lumens	0.0	0.0	0.0	200.0
1_Simpatic_Lumens	100.0	100.0	0.0	200.0
1_Simpatic_100.0	0.0	0.0	0.0	200.0

SPECIFICATIONS

Material of Construction	316L Stainless Steel
Dimensions	70 x 50 x 25 cm (H x L x D)
Weight	40 kg (110 pounds)
Resolution	100 μ m (50 μ m possible)
Pulp Flow	2 - 4 m ³ /h
Max Pulp Pressure	2 bars
Camera	IP Gigabit Camera B&W or Color
PC	To be delivered by the Mill (In option)

Please contact our certified representative:

