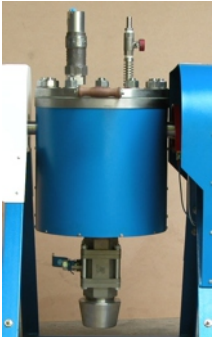


LABORATORY REACTOR model HB-51



The laboratory reactor model HB-51 has been designed for pilot chemical, semi-chemical and thermal pre-treatments of several types of biomass.

Unique patented rotative vessel design ensures perfect mixing and homogeneous reaction.

Rugged construction with reaction vessel fully manufactured in AISI 316 stainless steel ensures a safe and reliable operation for many years long.

Removeable sturdy lid gives full access to internal section of reaction vessel and lower mounted 38 mm ball valve enables easy discharge of reacted materials directly from vessel.

Digital controller enables accurate temperature control and easy programming of cooking sequence.

MAJOR TECHNICAL CHARACTERISTICS

Reaction vessel	9 L total capacity / 6 L useful volume
Adjustable working conditions in the vessel	up to 215° C and 20 bar
Safety valve	25 bar
Digital temperature controller	Resolution 0,1° C
Digital pressure indicator	Resolution 0,1 bar
Electrical heating system	5.000 W
360° Rotative vessel	(4 ± 0,5) rpm
SEW drive gearmotor	

Power supply	220 VCA, 60 Hz, 5,5 kW, single phase
Dimensions	(900 x 1300 x 1090) mm (W x L x H)
Weight	220 kg

Note: due to constant development our equipment design and specifications are subject to change without notice.

Address: Av. Dr. Alberto Jackson Byington, 1595 • **CEP:** 06276-000 - Osasco - SP - Brazil
Phone: + 55 11 3601 5700 • **e-mail:** regmed@regmed.com.br
www.regmed.com.br